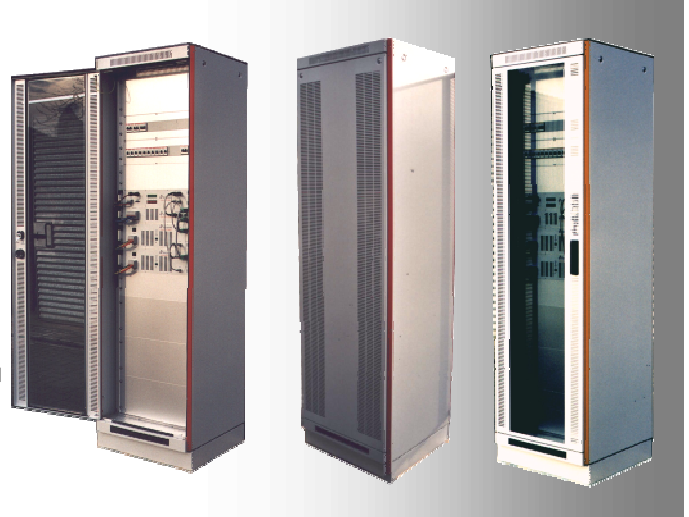


-L-a-v-a-L-I-N-E ©

Inverter System 8 kVA with Bypass

- mounted in 19"-cabinet
- flexible upgrade possible
- all components in 19"- assembling carriers
- potential free, short-circuit- and overload protected
- output power up to 20 kVA per cabinet
- output power up to 48 kVA per total system
- display of all system values
- system settings via implemented system menu
- automatically sent alarm and status messages



Specifications

General

| | |
|--------------------|----------------------------|
| Electrical safety | EN 60950, VDE 0805 |
| Efficiency | > 88% by nominal load |
| Galvanic isolation | 3.75 kV DC |
| EMC (emission) | EN 50081-1/2 |
| EMC (immunity) | EN 55022B |
| OP temperature | -5 to +45°C non condensing |

Controller LAVCON

| | |
|------------|---|
| Dimensions | 2 HE/ 84 TE, 201 mm depth |
| Weight | app. 2.8 kg |
| Input DC | 48/60 VDC (38-72) VDC or 110 VDC (88-132) VDC |
| Input AC | 230 VAC/ 50 Hz |

Bypass LAVBYP120

| | |
|------------------|---------------------------|
| Dimensions | 3 HE/ 84 TE, 201 mm depth |
| Weight | app. 7.5 kg |
| Current capacity | 120A |

2 x Inverter modules LAV4000

| | |
|------------|---|
| Dimensions | 3 HE/ 84 TE, 360 mm depth |
| Weight | app. 12 kg |
| Input DC | 48/60 VDC (38-72) VDC or 110 VDC (88-132) VDC |
| Output AC | 230 VAC/ 50 Hz |

Communications

RS-232 Standard via terminal program and external modem. Modem control functions with automatically sent alarm messages are integrated in the controller unit.

Housing

| | |
|------------------------|--|
| Dimensions (W x D x H) | 19"-cabinet 600 x 600 x 2000 mm (2100 with socket) |
| Classification | IP 20 |
| Ventilation | internal fans in the bypass and inverters as well as air gaps on the cabinet and transparent door. (Optional cabinet fan upon request.) |

Warranty

24 months

Electrical connections of the inverter system

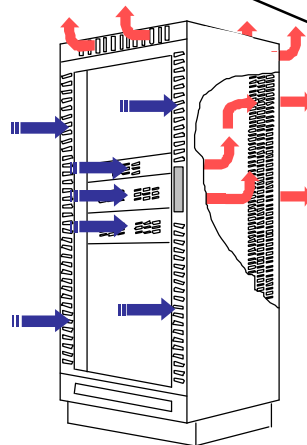
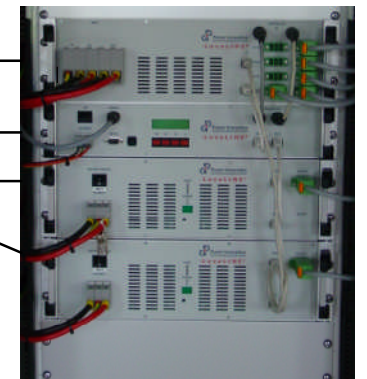
Battery DC-distribution

User AC-distribution with 2-pole circuit-breakers

Bypass module LAVBYP120

Controller LAVCON

2 Inverter modules LAV4000



Ventilation design