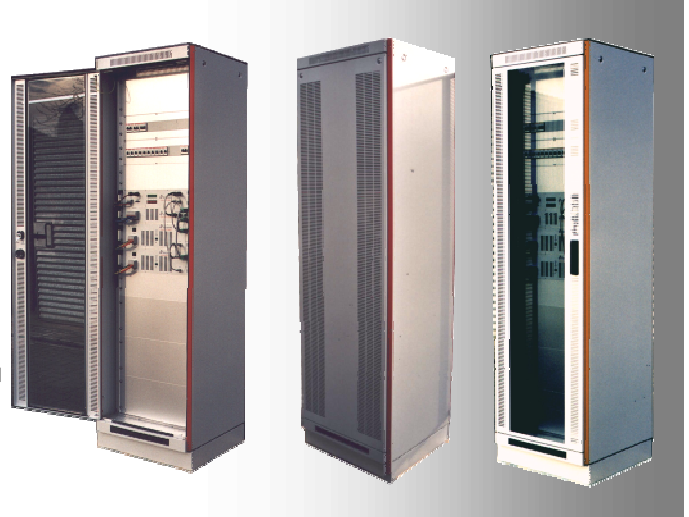


-L-a-v-a-L-I-N-E ©

Inverter System 8 kVA with Bypass

- mounted in 19"-cabinet
- flexible upgrade possible
- all components in 19"- assembling carriers
- potential free, short-circuit- and overload protected
- output power up to 20 kVA per cabinet
- output power up to 48 kVA per total system
- display of all system values
- system settings via implemented system menu
- automatically sent alarm and status messages



Specifications

General

Electrical safety	EN 60950, VDE 0805
Efficiency	> 88% by nominal load
Galvanic isolation	3.75 kV DC
EMC (emission)	EN 50081-1/2
EMC (immunity)	EN 55022B
OP temperature	-5 to +45°C non condensing

Controller LAVCON

Dimensions	2 HE/ 84 TE, 201 mm depth
Weight	app. 2.8 kg
Input DC	48/60 VDC (38-72) VDC or 110 VDC (88-132) VDC
Input AC	230 VAC/ 50 Hz

Bypass LAVBYP120

Dimensions	3 HE/ 84 TE, 201 mm depth
Weight	app. 7.5 kg
Current capacity	120A

2 x Inverter modules LAV4000

Dimensions	3 HE/ 84 TE, 360 mm depth
Weight	app. 12 kg
Input DC	48/60 VDC (38-72) VDC or 110 VDC (88-132) VDC
Output AC	230 VAC/ 50 Hz

Communications

RS-232 Standard via terminal program and external modem. Modem control functions with automatically sent alarm messages are integrated in the controller unit.

Housing

Dimensions (W x D x H)	19"-cabinet 600 x 600 x 2000 mm (2100 with socket)
Classification	IP 20
Ventilation	internal fans in the bypass and inverters as well as air gaps on the cabinet and transparent door. (Optional cabinet fan upon request.)

Warranty

24 months

Electrical connections of the inverter system

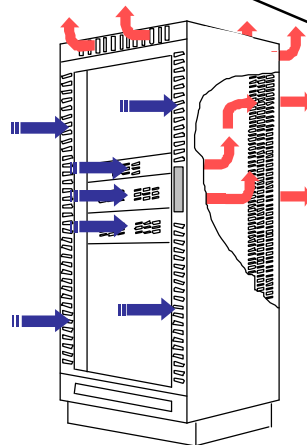
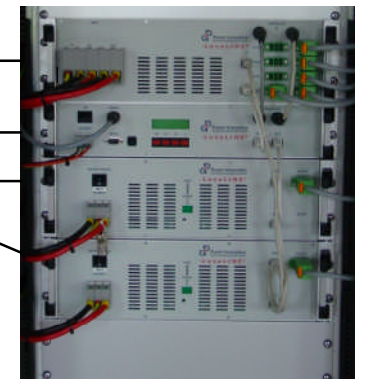
Battery DC-distribution

User AC-distribution with 2-pole circuit-breakers

Bypass module LAVBYP120

Controller LAVCON

2 Inverter modules LAV4000



Ventilation design